



**CHALLIS**  
ANTIBACTERIAL

CONTI 

Swiss Quality 

# Hygiene & Health

Competence in Hygienically  
Sensitive Areas



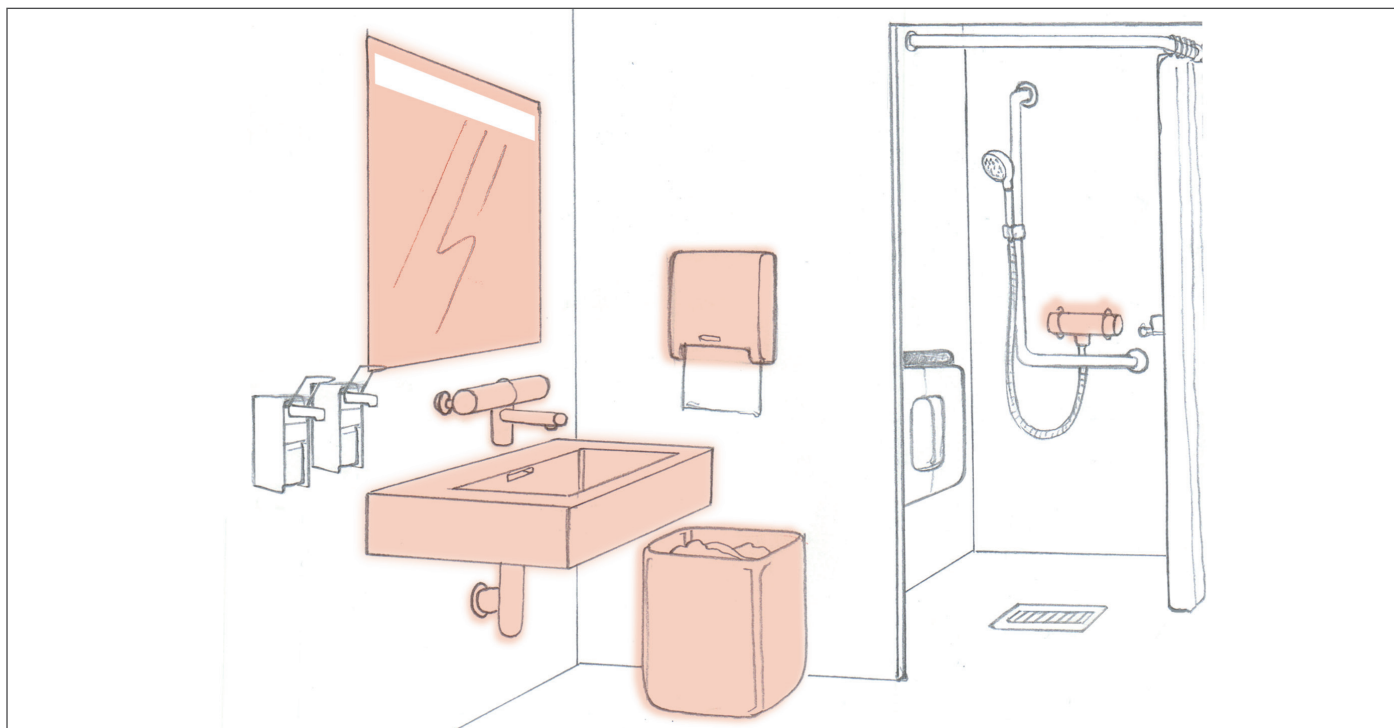


# Sanitary Products in Hygienically Sensitive Areas



Equipment for washing stations in hygienically sensitive buildings, for example in hospitals, medical practices, care homes, etc., has special requirements. A demanding challenge, which CONTI has long set itself, and for which we offer exceptional solutions: touch-free faucets that set a benchmark when it comes to fulfilling the highest hygiene standards.





CONTI offers a special range that has been carefully designed to cater for the stringent requirements of hygienically sensitive application areas.

The impression left by semi-public washrooms and toilets is an important aspect for any establishment. CONTI+ has set itself high standards when it comes to good design and visual appeal for many years and is, therefore, ideally placed to supply equipment for these kinds of facilities. Many of the products have received awards from well-known organisations – another reason why architects regularly turn to CONTI to supply products for their projects.

Non-contact operation is a must for hygienic environments. Intelligent sensors detect user proximity and automatically and reliably control the flow of water from the tap. Because no physical contact is required, there is a reduction in the transfer of bacteria which could potentially endanger the health of patients, customers and the like in these facilities.

CONTI+ products are more than simply hygienic and convenient; they are also extremely economical. Thanks to their non-contact function, water will only run when it's

needed, saving as much as 70 % on water. This, in turn, means running costs for water and energy can be significantly reduced. By choosing the optional solar module or the turbine, it is possible to achieve a battery life of up to 8 years. This makes an important contribution to the protection of the environment, as well as helping to reduce operating costs.

CONTI+ products and solutions are also distinguished by their toughness, tamper-resistance, durability and reliable operation. These characteristics are critical to all architects, design engineers, operators and owners of these kinds of amenities, as they assure low costs over the service life of these products. In many cases this is given far too little consideration and deserves greater attention in order to ensure installations remain trouble-free.



# Health, Hygiene, Prevention, Safety and Monitoring

---

## Solutions for Hygienically Sensitive Areas

Health is universally regarded as invaluable. Protecting and maintaining it, particularly in the sanitary rooms of hospitals, care homes, and other buildings where large numbers of people come together, is a major

challenge. The transmission and uncontrolled reproduction of pathogenic organisms must be reliably prevented. Appropriate preventive measures should be easy to carry out and verify.

### Health

There is a direct relationship between health and the availability of clean, fresh water. To ensure that the consistent quality of potable water is maintained, only materials that comply with the requirements for potable-water installations are used in the manufacture of CONTI faucets. The high-quality materials and components used are all lead free.

### Hygiene

Infections are transmitted mainly via the hands. Warmth and moisture provide an excellent basis for the propagation of germs and bacteria. Because there is no need to touch them, touch-free faucets reduce the risk of infection, with the additional advantage that the faucet itself remains clean and hygienic.



## Prevention

With thermal disinfection, CONTI faucets eliminate dangerous Legionella bacteria without chemical contamination of the water. In this procedure, the entire faucet is thermally treated with a flow of hot water at 70° C for five minutes. Thermal disinfection is made possible by a bypass valve to circumvent the thermostat, which would normally cut off the flow at 40° C.



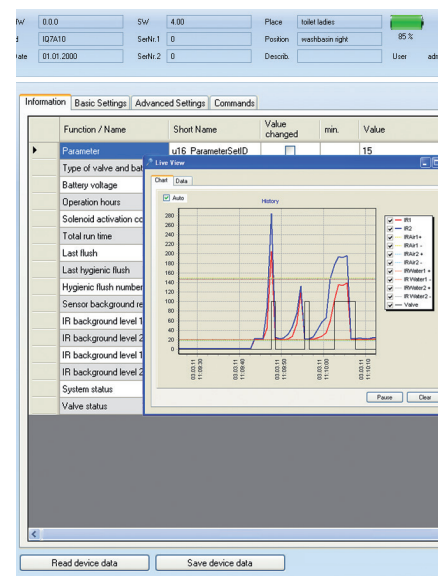
## Safety

Stagnant water in piping systems encourages the propagation of Legionella, Pseudomonas, and other bacteria. Anywhere that there may be longer periods that no water is drawn off, hygienic rinsing makes a valuable contribution to safety. At freely definable, use-dependent intervals, or in periods when they are not in use, the faucets initiate a rinsing operation.



## Monitoring

Trust is good, but records provided by the Service-Monitor reassure and improve safety. Usage data are stored in the faucets; they can be read out using a PC and a wireless connection for evaluation or convenient parameter setting. In this way, hygiene changes from an incalculable risk to a manageable task that the latest technology makes easy to carry out.



# Hygiene

Touch-free operation and clear forms ensure better hygiene for washing hands and easy cleaning of the washing station. Germ-inhibiting and antibacterial materials combined with hygienic rinsing help to minimize the spread of germs. Lead-free water-contact parts comply with the requirements for potable-water installations.

Especially designed for the health care sector, the high discharge spout enables hygienic hand washing up to the elbows. The specially developed hygiene mode for hospitals, medical practices, and other sectors where hand hygiene is particularly important encourages the observance of specified hand-washing intervals with a countdown feature.



## Hygienic Operation

Touch-free, safe operation



## Potable-Water Hygiene

Lead-free water-contact parts, antibacterial materials



## Hygienic Rinsing

Individually adjustable rinse durations, intervals, and times



## Thermal Disinfection

Disinfection without chemical water contamination

# Service

Established, thousandfold proven technology and high-quality components ensure many years of reliable operation. And should at some point service become necessary, the modular design makes maintenance especially easy and convenient. With models in the ultra range, there is no need to shut off the water at the angle stop valve thanks to the Twist-Stop feature – turning the valve module automatically shuts off the water supply. And with the One-Tool Service, all parts can be

changed without the use of tools – just a few simple manual operations are needed. All service operations are carried out from above the washstand surface. Operating states, for example “Low battery,” are clearly displayed by the side-mounted LEDs. With Click and Touch, many parameters can be quickly and easily changed. With these functions, a short off-period for cleaning the faucet, or a continuous flow, can be activated when required.



## Modular Design

Customer-specific versions on request



## Click/Touch

For special functions and programming



## Easy Tool

Simple maintenance, like conventional faucets



## LED Control

Fast diagnosis of operating states



## Service-Monitor

Analysis and setting of all operating data stored in the faucet





# Lavatory Faucets



## Hygiene with Safety

Reliable functions and a very high degree of hygiene through touch-free operation and additional hygiene features.

To counter the problems of stagnant water in piping, depending on the model, hygienic rinsing can be initiated at use-dependent intervals, or in freely definable periods when not in use. The Service-Monitor can activate a freely adjustable period of water flow lasting up to 20 minutes.

With the aid of the Service-Monitor, operating data stored in the faucet can be read out and evaluated. For convenience, the setting and control of functions can be carried out from a PC – safety in hygiene and function.

### Product Features:

- Touch-free operation
- Hygienic rinsing: individually adjustable rinse durations, intervals, and times
- Documentation of operating data using the Service-Monitor

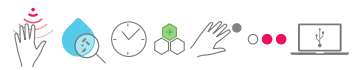




A20 / A10 / A 30

## IQ

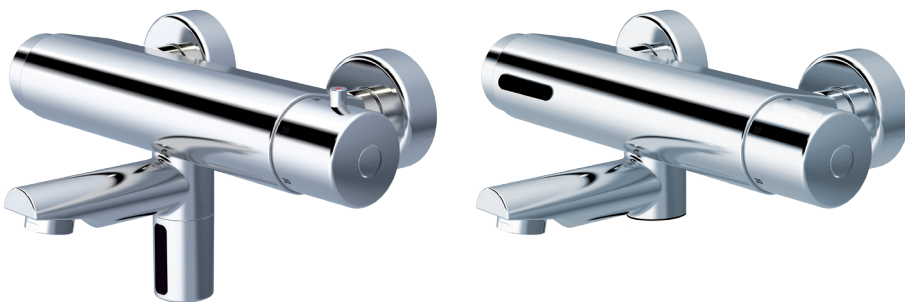
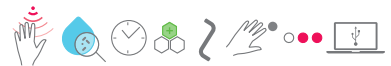
Touch-free, electronically controlled lavatory faucet with adjustable scald protection, individual adjustable or 12/24-hour hygienic rinse activatable



ultra GM10 EXPERT / GH10 EXPERT

## ultra

Touch-free, electronically controlled lavatory faucet in three different sizes, LCD Display, scald protection adjustable, individual adjustable or 12/24-hour hygienic rinse activatable, automatic energy saving function (solar)



lino W35

lino W45

## lino

Touch-free, electronically controlled wall-mounted lavatory faucet, with scald protection and auto-thermic protection, individual adjustable or 12/24-hour hygienic rinse activatable



# Shower Faucets



## Shower Enjoyment and a Clear Conscience

For touch-free shower enjoyment it is sufficient to approach the sensor. Depending on requirements, temperature regulation is carried out by a thermostat or a ceramic cartridge.

Hygienic rinsing can be initiated by pressing a button or by Click at individual intervals, or in freely definable periods when not in use. This counters the problems of stagnant water in piping and helps prevent the propagation of bacteria – for greater convenience and hygienic potable water.

Thermal disinfection via the optional bypass valve completes the combination of important functions for Legionella and Pseudomonas prophylaxis.

With the Service-Monitor compatibility, the evaluation of usage data becomes child's play – control facilitates security.

### **Product Features:**

- Touch-free or push-button operation
- Hygienic rinsing: individually adjustable rinse durations, intervals, and times
- Thermal disinfection
- Documentation of operating data using the Service-Monitor



lino DV30

## lino

Electronically controlled shower faucet for concealed installation with touch-free start/stop function, temperature adjustable with reliable thermostat cartridge, individual adjustable or 24/48/72-hour hygienic rinse, thermal disinfection



lino D35

## lino

Electronically controlled shower faucet for exposed installation with start/stop button, thermostat cartridge with anti-scalding, individual adjustable or 12/24-hour hygienic rinse,



Showermaster P30 / ProLife

## Showermaster

Electronically controlled shower-system with start/stop function or start/stop-button, individual adjustable or 12/24-hour hygienic rinse, thermal disinfection





## Technology meets Design

---

This maxim sums up the essence of CONTI+ sanitary solutions – pioneering products that break new ground in terms of form, materials, and technological development; environmentally friendly water saving products that not only enhance the comfort of users, but also benefit the environment; many years of experience systematically and continuously harnessed for the management of water savings in the sanitary sector.

We set ourselves very high standards. Attractive design, functional reliability, and easy operation and installation are essential requirements.

It is no wonder that CONTI+ sanitary solutions lead the way in the electronic sanitary fittings and solutions segment.

A talent for innovation, extremely high quality standards, and a reliable instinct for the needs of the market make CONTI+ products trend setters with excellent customer benefits.

### Swiss Quality

UK Distributor:

Challis Ag+  
Europower House, Lower Road,  
Cookham, Berkshire,  
SL6 9EH.

Telephone: 01628 529024  
e-mail: [info@challisms.com](mailto:info@challisms.com)  
Web: [www.challisagplus.com](http://www.challisagplus.com)



**CHALLIS**  
ANTIBACTERIAL